



webro

Connectivity Profile 2023/4

Webro do **more**
than you think...



Introducing Evolv[®] Solutions

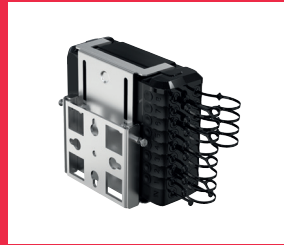
- Evolv[®] Terminals, Roc Drop Cable Assemblies and Accessories. Push. Click. Connected.
- Advanced, future-ready FTTx technology made for 5G and beyond
- Enable operators to save time, space, and infrastructure by pushing their networks to go faster, simpler, smaller, anywhere



CORNING

Evolv[®] Brackets

- Variety of bracket options to support easy installation across multiple environments
- Designed for use in most network access environments, from small scale handholes and pedestals where space is at a premium, to exposed building facades and aerial networks
- Choose from wall and pole-mounted terminal brackets, handhole-mounted brackets, and strand-mounted brackets



Evolv[®]

Accessories

- Field-installable SCA and OptiTap[®] converters provide simple compatibility with existing infrastructure
- Port cleaners deliver full connector end face cleaning for both Pushlok[™] and OptiTap[®] connectors
- Terminal covers can be painted to camouflage terminals on buildings



Evolv[®] Compact Terminals

- Preconnected Evolv[®] Terminals with Pushlok[™] mating for split-second coupling to reduce the time and cost of drop cable deployment. Available in 4,8,12, & 16 Port options
- Compact, durable, hardened single-fibre connectors that leverage SC/APC compatible ferrules
- Backwards compatible with widely used threaded OptiTap[®] ports with a field-installed adaptor, and can be converted for use with standard SC/APC patch panels
- Available in splitter, stubbed, or pre-terminated options



Opti-Sheath[®] Multiport Terminals

- OptiSheath[®] Multiport Splitter Stubbed and Stubless Terminals are designed for external fibre access networks, providing fast, easy connections and splitter functionality in a single low-profile housing. Available in 4, 8, and 12 port options
- Optisheath UltraNAP[™] Terminals reduce the number of road crossings required, increase capital deferment opportunities, and minimise total installation costs. Available in 4 and 6 port options
- Multiport Flex Terminals exceptionally reliable, protected by environmental sealing, making them ideal for FTTH applications. Available in 4,6,8, and 12 OptiTap[®] single-fibre ports



ROC™ Drop Cables

- Compact, single fibre drop cables suitable for aerial, duct, or buried outdoor applications
- Dielectric cables with FastAccess™ Technology save time, reduce complexity, and deliver more efficient, trade-friendly cable preparation
- Easy to use with simplified cable jacket removal providing up to 55% faster fibre access time; no special tools required
- Backward compatible cables for easy connectorisation or splicing
- Also available in preconnectorised assemblies



Webro Solutions

Webro has a hard-earned reputation for supplying premium quality cable & connectivity products and expert support to the Fibre & FTTx Telecoms sector. Our dependable, professional approach, drawn from exceptional knowledge and experience, ensures that we consistently deliver the best, high-quality product solutions to you with exceptional service.

Extensive Choice and First-rate Standards

The Webro range provides connectivity solutions, fibre-optic cables, and accessories for a wide variety of applications. From compact patch cords for last drop use and domestic installation, to larger enclosures delivering FTTx broadband to homes and businesses, our range covers most bases.

Across single fibre drop cables and multiports, to instant plug & play connectors and brackets, you have a vast choice of products to choose from – all designed to make FTTx deployment quick, easy, and cost-effective.

Dependable Service

We're renowned distribution experts. Rapid order fulfilment is driven from a fully stocked 35,000sq ft warehouse operation that enables the team to generate customised call-off orders. Response times to your enquiries and technical questions are second-to-none, and the approach to availability and lead-times is always focused on reliability, dependability, and trust.

With vast industry knowledge and a dedicated commitment to stock & availability, Webro combines extensive choice with bespoke service options including cut-to-length cables, customised call-off, and next-day delivery. Projects are always undertaken on a fully focused partnership basis with you too, to ensure the best possible outcome.

Webro Connectivity solutions cover the key market sectors including FTTx broadband, infrastructure, rail, marine & offshore, energy, education, retail, domestic, and manufacturing.

INTERESTED IN FIBRE-OPTIC CABLES? There's a separate brochure that outlines the full range. Request your copy from our sales team – see back page for contact details.

Looking for technical help & advice on a project? Need a quote?

We have dedicated experts who are ready to help support your next Fibre & Telecoms project.

Webro is ideally placed to support you with any undertaking, regardless of size or scope. The Webro Fibre & Telecoms Team understands installers' needs and pain points, and works closely with you to help manage projects, ensuring that they're delivered on time, to spec, and on budget.

Talk to our sales team to find out more:

info@webro.com | 0115 972 4483 | www.webro.com

webro

We do **more** than you think...

