

## PRODUCT + BENEFITS

- + **Compact boxes for a limited wall footprint**
- + **E@sy' Secure quick and strong anchoring system on entry port**
- + **Homogenous design of boxes for buildings of 1 to 17 Living Units**
- + **All optical components are compliant with DT performance specifications**
- + **IP55 rating**
- + **All splices are stored within dedicated splice trays**

## PRESENTATION

LUNA are compact enclosures designed for optical connections, now featuring a sleek design, improved waterproofing, and enhanced user experience.

The refined design includes better sealing for dust and water resistance, ergonomic opening clips, a security lock, and easy cap removal.

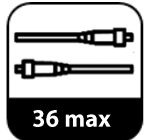
The enclosures still support splice trays, connectors, and splitters for various network applications and maintain a minimum bending radius of 30 mm for G652 and G657 fiber types.

Suitable for dusty areas, parking, cellars, façades, and poles with an IP/IK rating.

**New Design!**



**LUNA S**



**LUNA M**

### PRODUCT SPECIFICATIONS

Features	Performance		Reference standard
	Luna size S	Luna size M	
LU capacity	1, 2, 3	4-8, 9-12, 13-17	
Dimensions	270 x 180 x 60 mm	400 x 250 x 110 mm	
Weight (min to max depending on the models)	0,80 kg to 0,90 kg	1,90 kg to 2,15 kg	-
IP rating	IP55		DIN EN 60529
Impact	IK08	IK07	DIN EN 61300-2-12 at -25°C
Materia	PC compound		-
Flame resistance	V0		UL94
UV resistance	Compliant		DIN EN ISO 4892 3: method B, cycle n°5 (350 h)
Sockets	Flangless duplex LC/APC or flangeless simplex SC/APC Grade B, green colour IL ≤ 0,15 dB		IEC 61300-3-4 Method B
Pigtails	LC/APC or SC/APC plug G657A1 fiber 12 colors		DT TS 0311/96, Teil 4 c DT TS 0311/96, Teil 4 c DIN IEC 60304
Plugs (of pigtails and splitters)	LC/APC / SC/APC 8° Class B/1, green colour RL > 55 dB unplugged		IEC 61754-20 EN 61755 2 2:2006

### OPTICAL SPECIFICATIONS

Optical Features	Luna size S	Luna size M
Splice tray capacity	Up to 3 splice trays, with 12 splice protectors each Max. capacity : 36 splices	Up to 14 splice trays, with 12 splice protectors each Max. capacity : 168 splices
Adapters capacity	Up to 7 SC simplex or 7 LC duplex adapters	Up to 36 SC simplex or 36 LC duplex adapters
Splitter capacity – LC APC	Up to 3 splitters 1: 4, or 2 splitters 1:8 body splitter dimension (60x7x4mm)	Up to 6 splitters 1: 4, or 1:8 body splitter dimension (60x7x4mm)  Up to 2 splitters 1:16 body splitter dimension (60x12x5mm)  Up to 2 splitters 1:32 body splitter dimension (80x20x6mm)
Splitter capacity – SC APC	Up to 2 splitters 1: 4, or 1 splitters 1:8 body splitter dimension (60x7x4mm)	Up to 6 splitters 1: 4, or 4 splitters 1:8 body splitter dimension (60x7x4mm)  Up to 2 splitters 1:16 body splitter dimension (60x12x5mm)  1 splitter 1:32 body splitter dimension (80x20x6mm)

## CABLE & SEALINGS SPECIFICATIONS

Technical Features	Luna size S	Luna size M
Compatible input cables & SNR	7/4 mm SNR 12/8 mm SNR 7 mm direct-buried cable 8,1x4,5 mm oval aerial cable	
Compatible output cables	2-3 mm cable 5,5 mm cable 4,3-8,0 mm facade cable	
Anchoring method	E@sy'Secure system for SNR Screw to fix the aramid yarns or FRP of the cables	
Antivandal system	Thread for coded M4x19 screw	
Input	1 ø 2-12 mm	1 ø 2-12 mm
Output	Up to 3 outputs sealings : ø 4-8 mm 4 outputs ø 4-8 mm 13 outputs ø 2-3mm 12 patchcords	Up to 5 outputs sealings : ø 4-8 mm 4 outputs ø 4-8 mm 13 outputs ø 2-3mm 12 patchcords

## SPLICE TRAY SPECIFICATIONS

Features	Splice tray performance	Reference standard
Compatible splice protectors	12 ANT crimp splice protectors 12 HS splice protectors ø2,3 to 2,6mm, lenght to 40 to 60mm	-
Compatible fiber type	G652D, G657A1, G657A2	Minimum curves of radius 30 mm
Height of the splice tray	6 mm	-
Length of 250 µm fiber that can be stored	> 36 m	Storage of 2x12 pigtailed of 1,50 m

## DRAWING BOX SIZE S

Dimensions : 270 x 180 x 60 mm



New Lock!

Pen

Document holder

Splice trays

Aramid screw for feeder cable fixation

Frame with numbered sockets positions from 1 to 14

E@sy'secure fixation system for SNR and cables

Parking positions for un-connected pigtails



Aramid screws for cable fixation

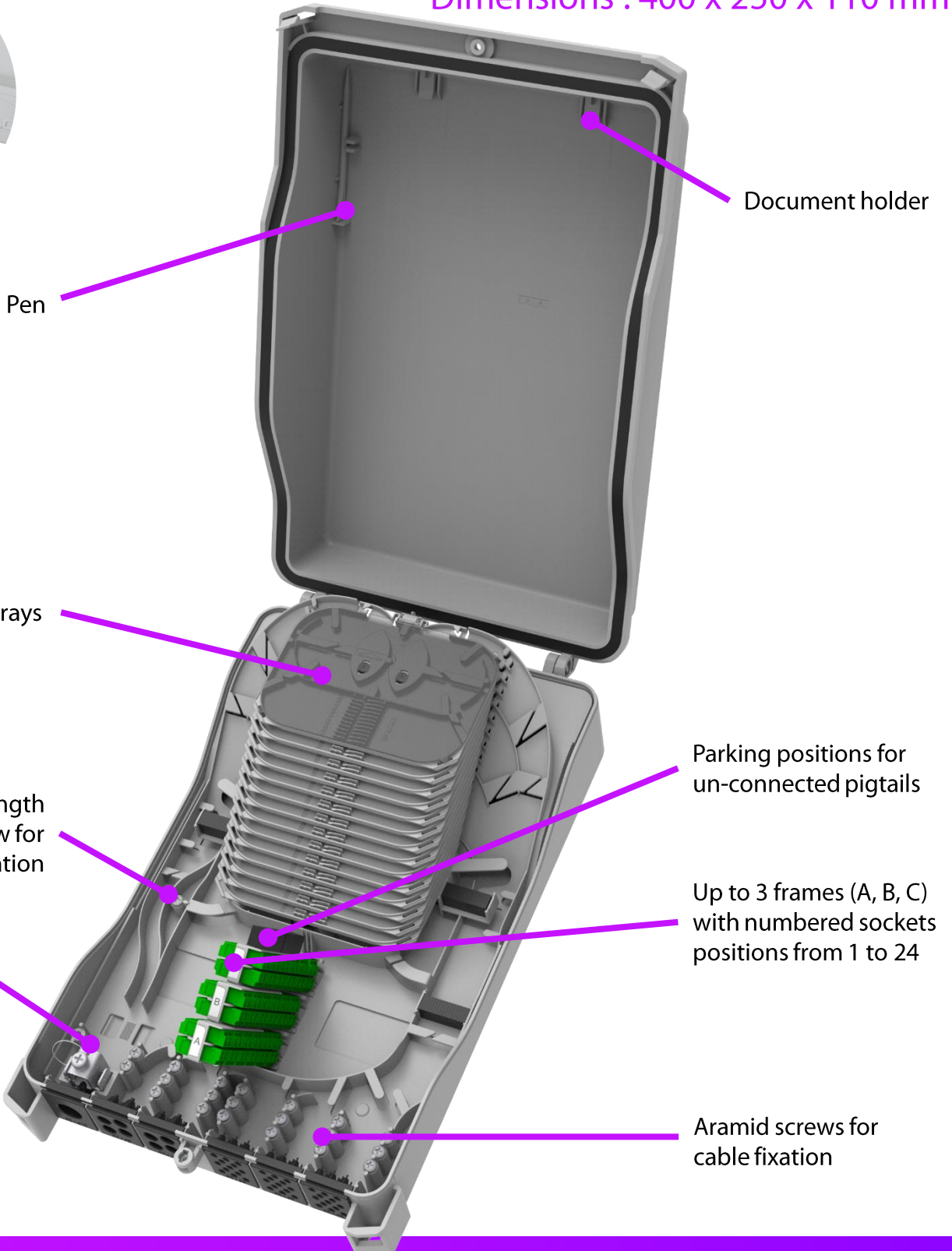


## DRAWING BOX SIZE M

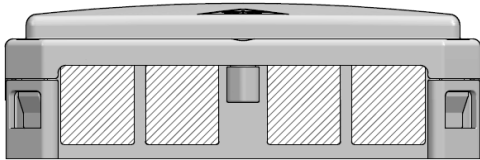
Dimensions : 400 x 250 x 110 mm



New Lock!

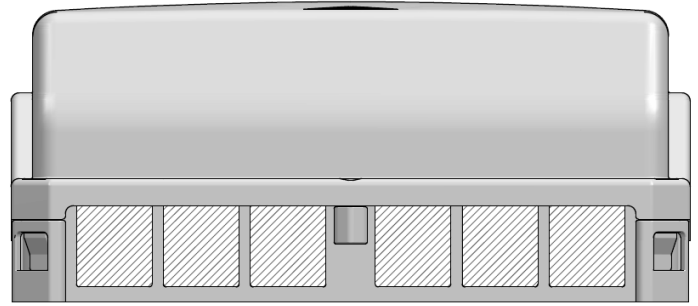


## CABLE INPUT AND OUTPUT PORTS



### LUNA S

4 possible input/output ports

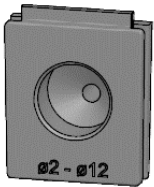


### LUNA M

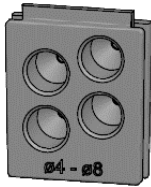
6 possible input/output ports

## SEALINGS

### CABLE SEALS



1 x ø2-12 mm

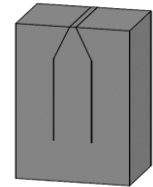


4 x ø4-8 mm



13 x ø2-3 mm

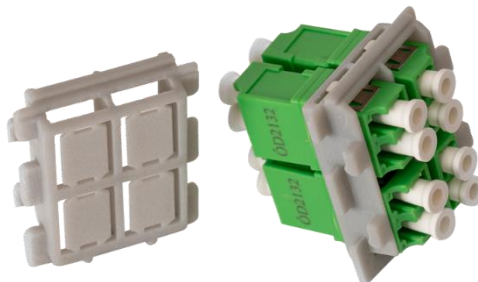
### SLIT SEAL FOR PATCHCORDS



Slit seal for patchcords  
12 x ø2-3 mm

## EXTERNAL ADAPTER HOLDER

Can hold 4x SC SX or  
LC DX adapters



## ORDERING INFORMATION

Part number	Part name	Optical components	Sealing ports	Splice trays & others
CO623-HS	<b>LUNA 3</b> Size S	6 x pigtails 3 x LC/APC duplex sockets	1 sealing port 1x 2-12mm 1 sealing port 13x 2-3mm	2 x splice trays 1 tool / pen for pigtail positioning
CO626-HS	<b>LUNA 6</b> Size S	12 x pigtails 6 x LC/APC duplex sockets	1 sealing port 1x 2-12mm 1 sealing port 13x 2-3mm	2 x splice trays 1 tool / pen for pigtail positioning
CO627-HS	<b>LUNA 7</b> Size S	14 x pigtails 7 x LC/APC duplex sockets	1 sealing port 1x 2-12mm 1 sealing port 13x 2-3mm 1 sealing port 4x 4,3-8 mm	3 x splice trays 1 tool / pen for pigtail positioning
CO632-HS	<b>LUNA 12</b> Size M	24 x pigtails 12 x LC/APC duplex sockets	1 sealing port 1x 2-12mm 2 sealing port 13x 2-3mm 1 sealing port 4x 4,3-8 mm	4 x splice trays 1 tool / pen for pigtail positioning
CO634-HS	<b>LUNA 24</b> Size M	48 x pigtails 24 x LC/APC duplex sockets	1 sealing port 1x 2-12mm 2 sealing port 13x 2-3mm 2 sealing port 4x 4,3-8 mm	8 x splice trays 1 tool / pen for pigtail positioning
CO636-HS	<b>LUNA 36</b> Size M	72 x pigtails 36 x LC/APC duplex sockets	1 sealing port 1x 2-12mm 3 sealing port 13x 2-3mm 2 sealing port 4x 4,3-8 mm	12 x splice trays 1 tool / pen for pigtail positioning